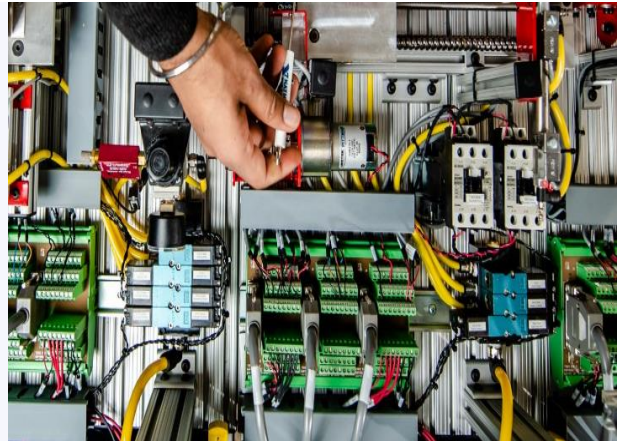


# BACHELORS: ELECTRONICS ENGINEERING TECHNOLOGY

Are you looking to move up the ladder at your current job or start a new career?

Have you completed an Associate degree from an accredited college/university?

Are you eager to complete your Bachelor's degree in as little time as possible?



## COMPLETING YOUR DEGREE IS AS EASY AS 1, 2, 3...

**1**

Send official college transcripts to Office of the Registrar at:

829 S. Wabash  
Suite W802  
Chicago, IL 60605

An Associate degree or other previously earned college credits are eligible for transfer credit review.

**2**

Attend your transfer program planning session and register for classes by clicking [here](#) or emailing us at [admissions@eastwest.edu](mailto:admissions@eastwest.edu)

**3**

Start classes now and finish your Bachelor's Degree in two years or less!

Questions?  
Call 312-939-0111

Whether an Associate degree or previous college credits, up to **132** quarter credit hours may be accepted.

## FINISH YOUR COURSES WITH EAST-WEST UNIVERSITY TODAY!

All that time and effort you worked so hard to achieve with your previous education is not wasted at East-West University!

Looking to finally complete your Bachelor's degree, but you don't have the time to start from scratch? No worries! Today's the day to...

## INVEST IN YOURSELF!

Transfer your previously earned college credits into our Bachelor's degree and graduate in two years or less!

## RECEIVING CREDITS

**Transfer your credits in from a Non-Technical Associate degree and the courses below (92 quarter credit hours) will be applied to your East-West University Bachelor's degree!**

### General Education (48 credit hours)

- ✓ EN151- Rhetoric and Style
- ✓ EN152- Writing from Sources
- ✓ EN166- Speech
- ✓ \*Choose one course: EN213 or EN214
- ✓ MT155- Intermediate Algebra
- ✓ PH220- Engineering Physics I
- ✓ PH221- Engineering Physics Laboratory I
- ✓ PL101- Introduction to American Government
- ✓ SC101- Introduction to Sociology
- ✓ HM101- Humanities I
- ✓ EC202- Macroeconomics
- ✓ CI101- Computer Technology and Applications

### EET Major Core Courses (12 credit hours)

- ✓ ET101- Basic Electronics
- ✓ ET102- Basic Electronics Workshop
- ✓ DT103- Fundamentals of Drone Technology

### Major Field of Concentration (24 credit hours)

- ✓ ET290- Microcontrollers
- ✓ ET291- Microcontrollers Lab
- ✓ ET320- Laser Fundamentals
- ✓ ET375- Environmental Electronics I
- ✓ ET420- Fiber Optics
- ✓ MT430- Engineering Math

### Cognitive or Supporting Field (4 credit hours)

- ✓ CI105 Web Page Design

### Electives (4 credit hours)

- ✓ \*Elective Course (4 quarter credits)

## REMAINING COURSES

**Remaining courses required for an East-West University Bachelor's Degree**

### General Education (16 credit hours)

- EN157- Practical Research Writing
- HM279- East-West Signature Course
- MT160- Elementary Plane Trigonometry
- HM491- Senior Seminar

### EET Major Core Courses

#### Core Courses (28 credit hours)

- ET106- Circuit Analysis
- ET107- Circuit Analysis Laboratory
- ET150- Introduction to Digital Systems
- ET151- Digital Systems Laboratory
- ET155- Solid State Devices
- ET156- Solid State Devices Laboratory
- ET492- Senior Project

### Major Field of Concentration (24 credit hours)

(NOTE: You must choose 24 credit hours/6 courses from the below options- 12 credits/3 courses must be from the 400+ level)

- ET203- Fundamentals of Communication Engineering
- ET270- Digital Circuits I
- ET271- Digital Circuits Laboratory I
- ET300- Filter Design
- ET301- Filter Design Laboratory
- ET303- Digital Communication Engineering I
- ET315- Integrated Circuits
- ET316- Integrated Circuits Laboratory
- ET330- Industrial Electronics I
- ET364- RF Circuit Design and Applications II
- ET370- Digital Circuits II
- ET371- Digital Circuits Laboratory II
- ET378- Digital Signal Processing
- ET379- Digital Signal Processing Laboratory
- ET403- Digital Communications Engineering II
- ET430- Industrial Electronics II
- DT202- Fundamentals of Aviation Engineering
- DT302- Drone Fabrication Engineering
- DT303- Drone Fabrication Engineering Lab
- DT485- Embedded Technology
- DT486- Embedded Technology Laboratory

### Cognate or Supporting Courses (20 credit hours)

- CI216- C#
- CI221- Python I
- MT201- Calculus I
- MT202- Calculus II
- MT221- Statistics